

# LITIBÚ BAY CLUB

GOLF VILLA | PENTHOUSE





The penthouse level view toward the infinity edge pool.



The great room sets the stage for relaxed entertaining open to tropical breezes.

## GOLF VILLA PENTHOUSE BUILDING B & C 4-BED | LEVEL 4

### INCLUDES SERVICE QUARTERS

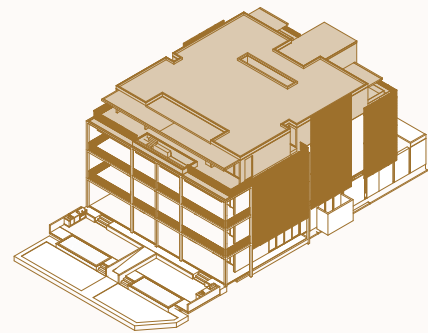
The Golf Villa Penthouse at Litibú Bay Club offers the elevated scale and graciousness of penthouse living in a single-family estate. Defined by airy, natural-light-filled interiors, the top-level residence flows effortlessly from one space to the next and is finished in earthen, organic materials, creating a contemporary retreat infused with warmth and soulful comfort. Central to the penthouse is an expansive outdoor terrace with a dramatic infinity edge pool that affords breathtaking views in every direction, including the vibrant 18<sup>th</sup> hole of the Higuera Golf Club. Each bedroom has its own private terrace and an exclusive, private entry offers direct access to the penthouse via elevator or stairs.

4 Bedrooms

4.5 Bathrooms

	sm / sf
Interior:	372 / 4,004
Terrace (Covered):	107 / 1,151
Outdoor Terrace:	71 / 764
Exterior Combined:	178 / 1,915

**TOTAL: 550 sm / 5,920 sf**



0 8 16 24 32'  
1/16" = 1'-0" at 11"x17"



- |                    |                    |                    |
|--------------------|--------------------|--------------------|
| 1 Entry            | 7 Dining Room      | 13 Bathroom        |
| 2 Laundry Room     | 8 Master Suite 1   | 14 Terrace         |
| 3 Service Quarters | 9 Master Suite 2   | 15 Covered Terrace |
| 4 Pantry           | 10 Master Bathroom | 16 Pool            |
| 5 Kitchen          | 11 Powder Room     | 17 Grill           |
| 6 Living Room      | 12 Bedroom         | 18 Elevator        |
|                    |                    | 19 Stairs          |

LITIBÚ



BAY CLUB

[litibubayclub.com](http://litibubayclub.com) | [info@litibubayclub.com](mailto:info@litibubayclub.com)